

SITE PLAN INFORMATION TAKEN FROM PLAN OF SURVEY OF PART LOT 21, CONCESSION 12 (FORMERLY VILLAGE OF CANNINGTON) TOWNSHIP OF BROCK, REGIONAL MUNICIPALITY OF DURHAM, PREPARED BY : ERTL SURVEYORS, ONTARIO LAND SURVEYORS, DATED APRIL 21, 2017

GENERAL NOTES

1. Drawings not to be used for construction unless authorized by the Consultant.
2. Contractor shall report any discrepancies between the drawings and site conditions to the Consultant prior to commencement of the work.
3. Utility information shown on the drawings is for general information only and may not be accurate. Utility locates must be obtained prior to the commencement of construction. All utility locates are the responsibility of the Contractor. Hand dig within the limits recommended by the service utility. Utility conflicts must be reported immediately to the Consultant.
4. All construction, safety, tree protection and sediment control fencing must be maintained throughout the duration of construction. No fencing shall be altered or relocated without the prior approval of the Consultant.
5. All landscape layout must be staked and then approved by the Consultant, prior to construction. This includes, but not limited to, layout of all landscape concrete foundation work, paving, lighting, furnishings and plantings.
6. Compaction testing of granular bases under all paved surfaces is required, and test results shall be approved by the consultant prior to installation of paving.

PLANTING NOTES

1. All plant material shall be No.1 nursery grown, meeting specifications for size, height, spread, grading, quality, method of cultivation, and baling and burlap specifications as set out in the latest guide specification for nursery stock prepared by the ONTA, unless otherwise explicitly noted.
2. No substitutions in species, cultivar, quantity, size or condition will be permitted without the written approval of the Consultant. Any unapproved, substituted material will be required to be removed from the site. Supplier issues that are not brought to the attention of the Consultant prior to planting will invalidate any claim of non-availability.
3. Any inconsistencies found in the quantities as shown on the plan and the plant list shall immediately be reported to the Consultant.
4. Stake-out of plant locations and inspection of delivered plant material to be approved by the Consultant prior to placement.
5. Native, imported and amended topsoil and planting mixes shall be tested as specified and approved by the Consultant prior to placement.
6. Depths of planting mediums and much shall follow the planting details, where applicable. Trees must be provided with a minimum of 15 cubic metres of planting medium per tree. Adjustments of planting medium depths and extents may be required to accommodate this volume requirement for trees. Breakouts may also be necessary, as indicated.
7. Plant material shall be thoroughly watered at the time of planting and follow the two year watering program as described in the "Required Watering Program".

TOPSOIL REQUIREMENTS

Topsoil, amendments and planting mixes shall be tested by an OMAFRA-accredited testing laboratory, and approved by the Consultant prior to mixing and placement. Planting mediums shall meet the following requirements:

Topsoil shall be fertile, friable, topsoil, free of: fragments larger than 75 mm in size; stones over 30 mm in diameter; debris; plants or their roots; sticks; noxious weed plants/seeds; salts; soil sterilants; chemical contaminants; or other materials detrimental to plant growth.

Topsoil characteristics shall be:

Topsoil texture range shall be:	5% - 30% clay; 15% - 50% silt; 25% - 70% sand
ph range:	6.0 - 7.8
organic matter (by dry weight):	4.0% to 15%
total salts (mmhos/cm):	< 0.45
phosphorous (ppm):	10 - 60
potassium (ppm):	50 - 250
calcium (ppm):	1000 - 4000
magnesium (ppm):	100 - 300
chloride (ppm):	< 100
sodium (ppm):	< 200
sodium absorption ratio:	< 15

Topsoil shall not be moved, delivered or worked on while in a frozen, wet or muddy condition. Topsoil shall be consolidated to prevent excessive subsidence (as indicated by deep footprints), but not compacted to greater than 85% SPMDS.

WATERING PROGRAM REQUIREMENTS

Plants enter a critical establishment period after their initial planting, providing adequate water is one of the most important factors affecting a plant's health following the establishment period.

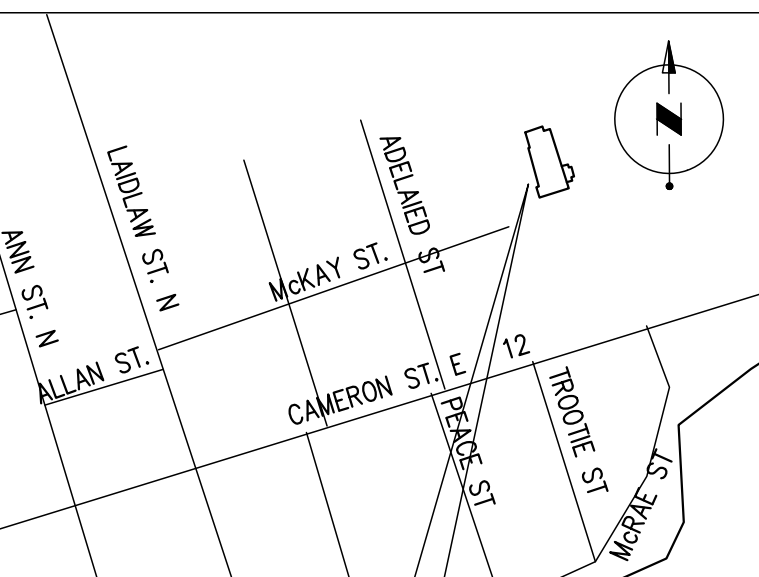
The intent of the watering program is that plantings are watered immediately after installation and then in a regular watering schedule during the first two growing seasons. The watering contractor shall obtain and supply all water, and all watering apparatus.

Watering Schedule:

- Season 1:
 - o Spring and summer plantings shall be watered weekly from installation until the week following Labour Day weekend.
 - o Fall plantings shall be watered weekly from installation until first ground frost.
- Season 2:
 - o Water weekly starting the week following Victoria Day weekend and completing the week before Labour Day weekend.

Watering quantity and frequency:

- Deciduous caliper trees: shall be watered with 40 litres of water immediately after planting and a trepot watering bag (spectrum products or approved equivalent) installed on each tree. Weekly watering shall be provided to fill the watering bag (approx. 55l) and provide additional watering to the tree basin to provide a minimum of 75 l per week.
- Coniferous caliper trees; large container trees and shrubs: shall be watered with 40 litres of water immediately after planting, weekly watering shall be provided to fill the tree basin and additional soil area around the tree to provide a minimum of 40 l per week.
- Planting beds: plants shall be watered immediately after planting with an amount relative to their container size in order to saturate the root ball. Weekly watering shall be provided to deliver a minimum of 40 l per square metre of planting bed per week.
- Sod: immediate and short-term watering is critical for sod establishment. Water within 1 hour after installation. Water at the following frequency to provide a minimum of 25 l per square metre of sod per occurrence: water within 1 hour after installation (day 1) and then on days 2, 3 and 4. water on days 7, 9 and 11. Starting on day 14, water weekly.



KEY PLAN SITE 100 MCKAY ST. N.T.S.

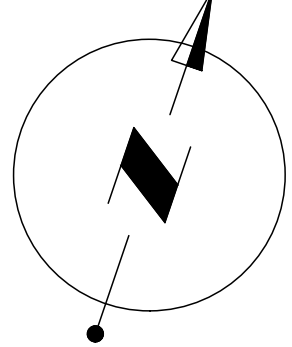
9	Issued for Construction	Dec. 14/18	AS
8	Revised as per SPA comments/Town of Brock	Sept. 12/18	AS
7	ISSUED FOR SPA	JUNE 18/18	AS
6	REVISED AS PER SPA COMMENTS	JUNE 5/18	AS
5	ISSUED FOR CONSULTANT COORDINATION	MAY 23/18	AS
4	ISSUED FOR HEAT PUMP LOCATION REVIEW	MAY 17/18	AS
3	REVISION TO SUITE LAYOUTS	MAY 12/18	AS
2	ISSUED FOR SPA	FEB. 20/18	AS
1	ISSUED FOR CONSULTANT COORDINATION	JAN. 30/18	AS
NO.	REVISIONS	DATE	BY:

"ALL DRAWINGS, SPECIFICATIONS AND RELATED DOCUMENTS ARE THE COPYRIGHT PROPERTY OF THE ARCHITECT AND MUST BE RETURNED UPON REQUEST. REPRODUCTION OF DRAWINGS, SPECIFICATIONS AND RELATED DOCUMENTS IN PART OR WHOLE IS FORBIDDEN WITHOUT THE ARCHITECT'S WRITTEN PERMISSION". DRAWINGS SHALL NOT BE SCALED

CONTRACTOR MUST CHECK AND VERIFY ALL DIMENSIONS ON THE JOB.



421 RMCESVALLES AVENUE, TORONTO, ON M6R 2N1 CANADA
1 416 340 8700 • 416 340 7105 NAK@NAKDESIGNSTRATEGIES.COM



PROJECT:
NEW 2 STOREY BUILDING:
SENIORS RESIDENCE
100 MCKAY STREET,
CANNINGTON, ONTARIO

DRAWING:
OVERALL
LANDSCAPE PLAN

THIS DRAWING SHALL NOT BE USED FOR CONSTRUCTION PURPOSES UNLESS COUNTERSIGNED BY:

DRAWN BY:	OS	CHECKED BY:	PD
DATE:	AUG. 2013	SCALE:	1:250
PROJECT NO:	18023	DRAWING NO:	L1